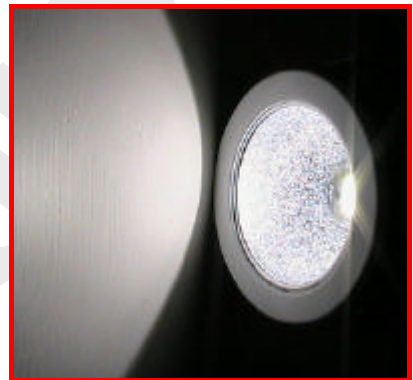
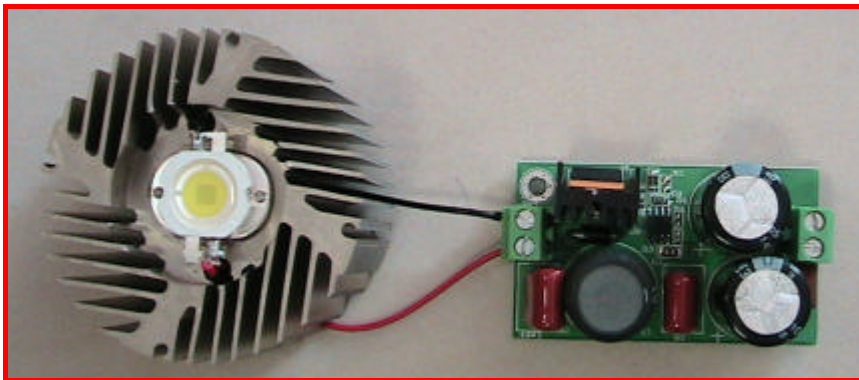
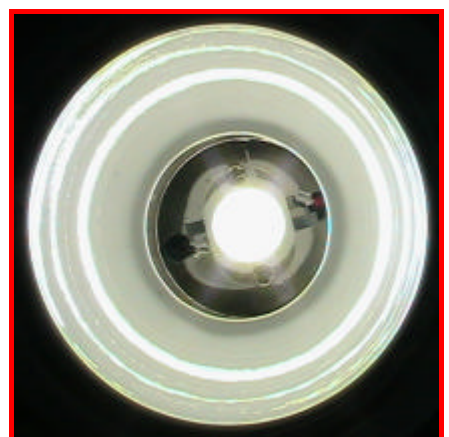
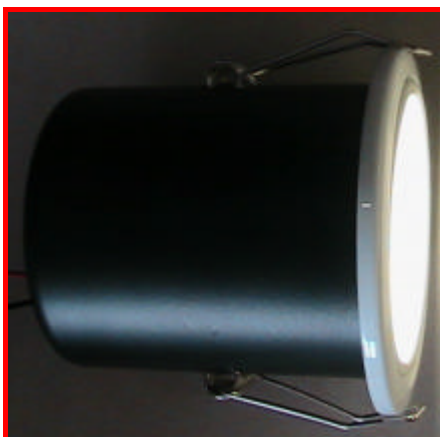




SPECIFICATION



P/N: LCT-050BW-M2-C-CC



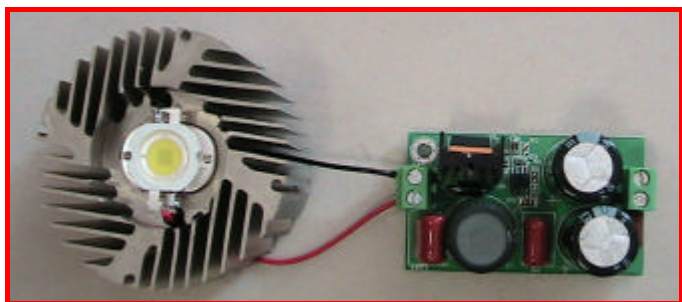
光圓科技股份有限公司

LED CIRCLE Technology Corporation

新竹市竹光路 8 號 14 樓之 8

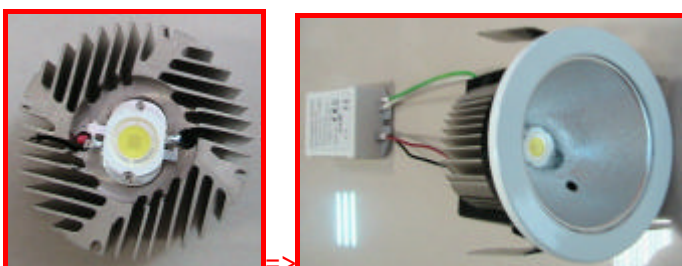
14F-8, No. 8, Zhu-Guang Rd., HsinChu City, Taiwan

WEB: www.ledcircle.com E-Mail: zeno@ledcircle.com TEL : +886-3-540-2430

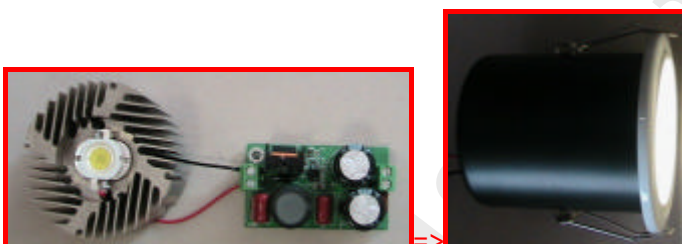


Examples: Diameter=60mm ; Height=32

#1: External Driver (Driver Outside)



#2: Internal Driver (Driver Inside)



Description

The **LCT-050BW-M2-C-CC** is a Talent LED Module. It is integrated by single package of **5W** high power LEDs and ALVA CCD power supply. This product line provides simple and compact solution for traditional lighting in different size fitted into existing fixture. *The size including LED PCB and CCD power supply, the LEDs, the colour pattern, the array layout and the CCD driver layout are opened for being customized to meet the requirement of the existing fixture.*

Features

- The heat is efficiently managed at preferable working temperature.
- Easy for being retrofitted into existing traditional lighting fixture

Benefits

- Have flexible configurations including Warm white, White, Red, Green, Blue, Yellow and RGB mixed and other customized configuration.
- Enhance the value of your products
- Provides flexibility to designers
- 5W~10W LEDs.
- It is a hazard free product
- It can be integrated into existing lighting system
- Facilitates new fixture design
- Facilitates low profile fixture design
- Optimisation of the usage of the system power.

Typical Applications

- Architectural lighting
- Indoor lighting
- Ceiling lighting

Selection Guide

Part Number	Description
LCT-050BW-M2-C-CC-5WW	5W warm White/Universal Input
LCT-050BW-M2-C-CC-5SW	5W Sun White/Universal Input
LCT-050BW-M2-C-CC-5R	5W Red/Universal Input
LCT-050BW-M2-C-CC-5G	5W Green/Universal Input
LCT-050BW-M2-C-CC-5B	5W Blue/Universal Input
LCT-050BW-M2-C-CC-5Y	5W Yellow/Universal Input
LCT-050BW-M2-C-CC-5M	5W RGB/Universal Input
LCT-050BW-M2-C-CC-XXX	Customized

Note: The **XXX** is the project code of the customized products.

Electrical characteristics

Input		
Parameter	Min	Max
Input Voltage Range	85Vac	264Vac
Input Frequency	47Hz	63Hz
Input Current	N/A	2.0A-115Vac/60Hz
Efficiency	Typical 80%-85%	



LED Circle Technology Corporation

Web: www.ledcircle.com

E-mail: zeno@ledcircle.com

Tel: +886-3-540-2430

Fax: +886-3-538-0376

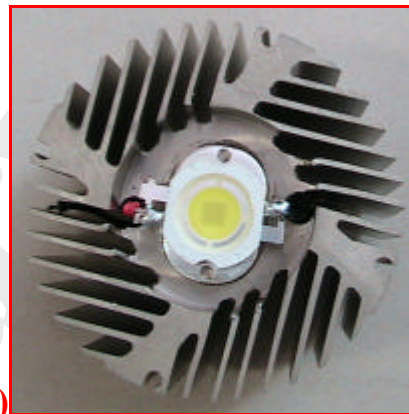
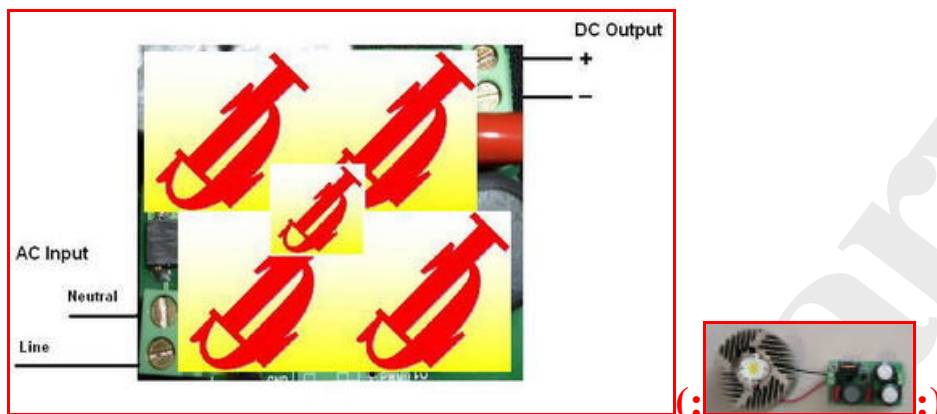
Environmental Ratings		
Parameter	Min	Max
Operating Ambient Temperature	-10	60
Storage Ambient Temperature	-20	80

Operating Ambient Temperature	-10	60
Storage Ambient Temperature	-20	80

Drawing and Diagram

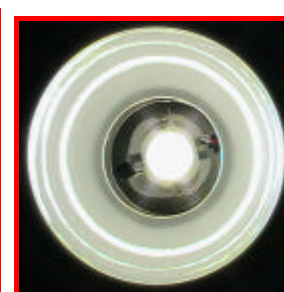
1. Alva CCD LED Driver. 60mm (L) x 35mm(W) x 30mm(H)

2. LED Module. 60mm(D) x 32mm(H)



Indoor Applications:

#1: External Driver (Driver Outside) #2: Internal Driver (Driver Inside)



Important: Please contact our engineer to ensure installation and maintenance being properly executed to obtain maximum performance, efficiency and durability from the LED lighting product.

Disclaimer: While every care has been taken with the details on this specification sheet, we accept no responsibility for any inaccuracies and reserve the right to change these specifications without notice to always ensure that you are receiving a superior product.

光圓科技股份有限公司
LED CIRCLE Technology Corporation
 新竹市竹光路 8 號 14 樓之 8
 14F-8, No. 8, Zhu-Guang Rd., HsinChu City, Taiwan
 WEB: www.ledcircle.com E-Mail: zeno@ledcircle.com TEL : +886-3-540-2430