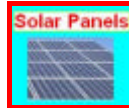




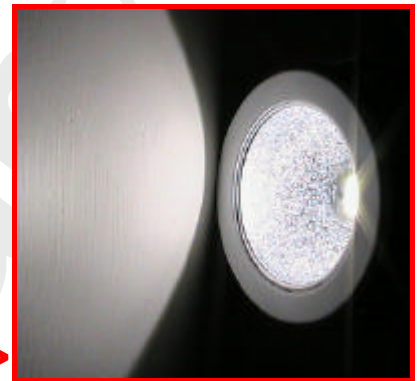
SPECIFICATION



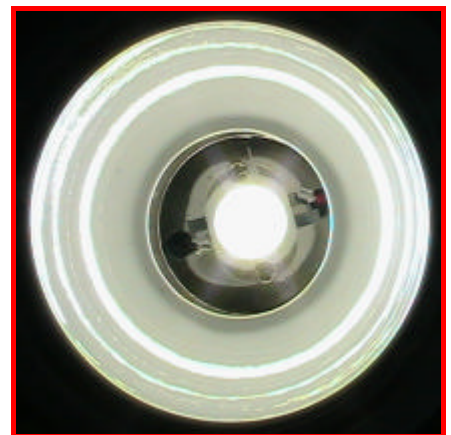
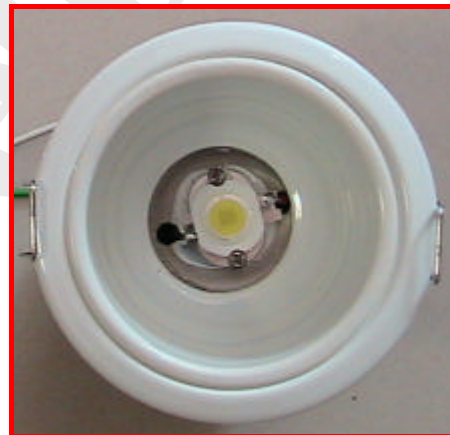
+



=>



P/N: LCTS-40S3P2-D



光圓科技股份有限公司

新竹市金山六街 55 號 1 樓 (新竹第二辦公室)

LED CIRCLE Technology Corporation

1F, No. 55, Jin-Shan 6th St., Hsin-Chu City 300, Taiwan, R.O.C. (Hsin-Chu 2nd Office)

TEL: +886-3-567-9283 Fax: +886-3-567-8764 Web : www.ledcircle.com; Email: philips@ledcircle.com

高品質的 LED 照明產品就在光圓科技===== LC provides high quality LED Lighting products



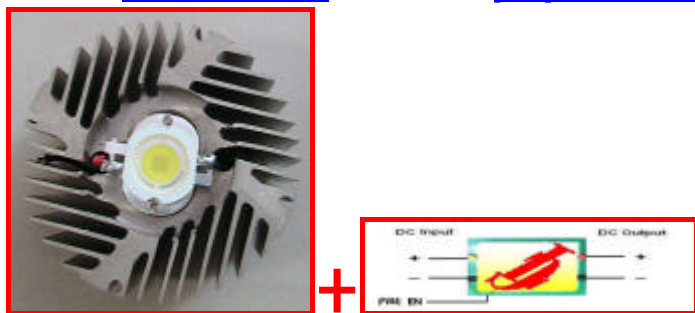
LED Circle Technology Corporation

Web: www.ledcircle.com

E-mail: philips@ledcircle.com

Tel: +886-3-5679283

Fax: +886-3-5678764



Examples: Diameter=60mm ; Height=32



Description

The **LCTS-40S3P2-D** is a Talent LED Module for **Solar System**. It is integrated by **10W** high power LEDs and ALVA CCD power supply with **(PWM) Dimming** interface. It is good for traditional lighting fitted into existing fixture. *The size including LED PCB and CCD power supply, the LEDs, the colour pattern, the array layout and the CCD driver layout are opened for being customized to meet the requirement of the existing fixture.*

Features

- The heat is efficiently managed at preferable working temperature.
- Easy for being retrofitted into existing traditional lighting fixture.
- The Driver is designed professionally for the Solar Power System.

Benefits

- Have flexible configurations including Warm white, White, Red, Green, Blue, Yellow and RGB mixed and other customized configuration.
- Enhance the value of your products
- Provides flexibility to designers
- Super High Power LEDs.
- It is a hazard free product
- It can be integrated into existing lighting system
- Facilitates new fixture design
- Facilitates low profile fixture design
- Optimisation of the usage of the system power.

Typical Applications

- Architectural lighting
- Indoor lighting
- Ceiling lighting

Selection Guide

Part Number	Description
LCTS-40S3P2-D-10WW	10W warm White/12Vdc Input/PWM EN
LCTS-40S3P2-D-10SW	10W Sun White/12Vdc Input/PWM EN
LCTS-40S3P2-D-10R	10W Red/12Vdc Input/PWM EN
LCTS-40S3P2-D-10G	10W Green/12Vdc Input/PWM EN
LCTS-40S3P2-D-10B	10W Blue/12Vdc Input/PWM EN
LCTS-40S3P2-D-10Y	10W Yellow/12Vdc Input/PWM EN
LCTS-40S3P2-D-10M	10W RGB/12Vdc Input/PWM EN
LCTS-40S3P2-D-XXX	Customized

Note: The **XXX** is the project code of the customized products.

Electrical characteristics

Input

Parameter	Min	Max
Input Voltage Range	12Vdc-5%	12Vdc+5%
EN input voltage	0	12Vdc
EN Trip Level	V _{IH} =2.0V	V _{IL} =0.5V
Efficiency	85%	95%



LED Circle Technology Corporation

Web: www.ledcircle.com

E-mail: philips@ledcircle.com

Tel: +886-3-5679283

Fax: +886-3-5678764

Environmental Ratings		
Parameter	Min	Max

Operating Ambient Temperature	-10	60
Storage Ambient Temperature	-20	80

Drawing and Diagram

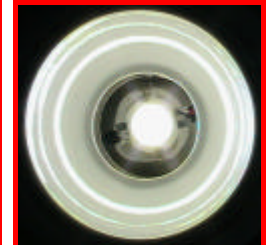
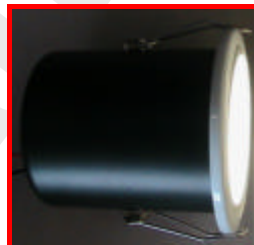
1. Alva CCD LED Driver. 22mm (L) x 11mm(W) x 3mm(H)

2. LED Module. 60mm(D) x 32mm(H)



Indoor Applications:

#1: External Solar Panels + Internal Driver (Driver is integrated into the light fixture)



Important: Please contact our engineer to ensure installation and maintenance being properly executed to obtain maximum performance, efficiency and durability from the LED lighting product.

Disclaimer: While every care has been taken with the details on this specification sheet, we accept no responsibility for any inaccuracies and reserve the right to change these specifications without notice to always ensure that you are receiving a superior product.

光圓科技股份有限公司

新竹市金山六街 55 號 1 樓 (新竹第二辦公室)

LED CIRCLE Technology Corporation

1F, No. 55, Jin-Shan 6th St., Hsin-Chu City 300, Taiwan, R.O.C. (Hsin-Chu 2nd Office)

TEL: +886-3-567-9283 Fax: +886-3-567-8764 Web : www.ledcircle.com; Email: philips@ledcircle.com

高品質的 LED 照明產品就在光圓科技===== LC provides high quality LED Lighting products