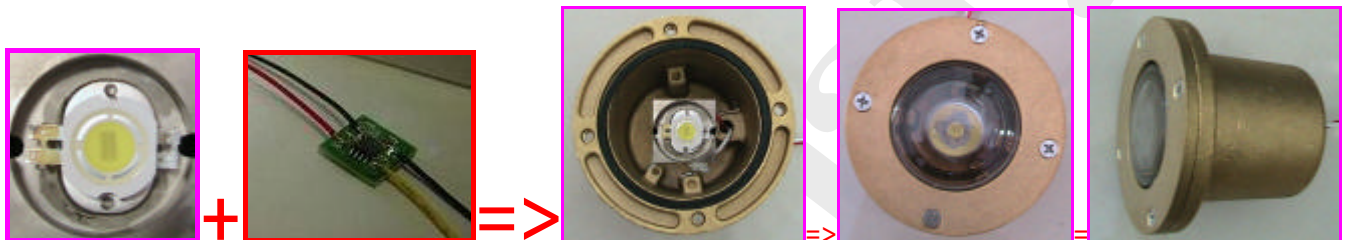
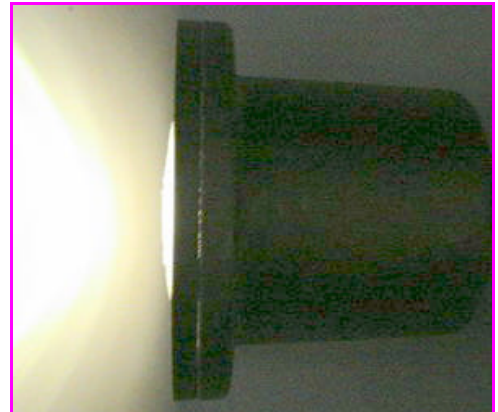
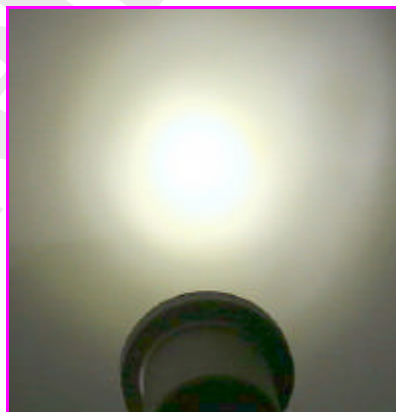




SPECIFICATION



P/N: LCTS-40S6P1-O



光圓科技股份有限公司
 新竹市金山六街 55 號 1 樓 (新竹第二辦公室)
LED CIRCLE Technology Corporation
 1F, No. 55, Jin-Shan 6th St., Hsin-Chu City 300, Taiwan, R.O.C. (Hsin-Chu 2nd Office)
 TEL: +886-3-567-9283 Fax: +886-3-567-8764 Web : www.ledcircle.com; Email: philips@ledcircle.com
 高品質的 LED 照明產品就在光圓科技===== LC provides high quality LED Lighting products



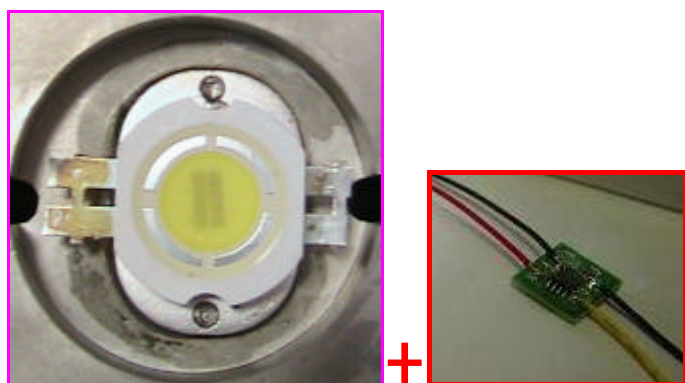
LED Circle Technology Corporation

Web: www.ledcircle.com

E-mail: philips@ledcircle.com

Tel: +886-3-5679283

Fax: +886-3-5678764



Examples: 10W Outdoor Spot Light. (IP65-IP68)



Description

The **LCTS-40S6P1-O** is a Talent LED Module for **Solar System**. It is integrated by **10W** high power LEDs with special heat-sink and ALVA CCD power supply. It is good for **Waterproof** (IP65~IP68) lighting products. *The size including LED PCB and CCD power supply, the LEDs, the colour pattern, the array layout and the CCD driver layout are opened for being customized to meet the requirement of the existing fixture.*

Features

- The heat is efficiently managed at preferable working temperature.
- Easy for being retrofitted into existing traditional lighting fixture

Benefits

- Have flexible configurations including Warm white, White, Red, Green, Blue, Yellow and RGB mixed and other customized configuration.
- Enhance the value of your products
- Provides flexibility to designers
- Super High Power LEDs.
- It is a hazard free product

- It can be integrated into existing lighting system
- Facilitates new fixture design
- Facilitates low profile fixture design
- Optimisation of the usage of the system power.

Typical Applications

- Architectural lighting
- Outdoor lighting/Garden lighting
- Wall Wash lights
- Bollard lights
- Path lights
- Spot lights
- Up lights
- Landscape lights

Selection Guide	
Part Number	Description
LCTS-40S6P1-O-10WW	10W warm White/24Vdc Input/Waterproof
LCTS-40S6P1-O-10SW	10W Sun White/24Vdc Input/ Waterproof
LCTS-40S6P1-O-10R	10W Red/24Vdc Input/ Waterproof
LCTS-40S6P1-O-10G	10W Green/24Vdc Input/ Waterproof
LCTS-40S6P1-O-10B	10W Blue/24Vdc Input/ Waterproof
LCTS-40S6P1-O-10Y	10W Yellow/24Vdc Input/ Waterproof
LCTS-40S6P1-O-10M	10W RGB/24Vdc Input/ Waterproof
LCTS-40S6P1-O-XXX	Customized

Note: The **XXX** is the project code of the customized products.

Electrical characteristics		
Input		
Parameter	Min	Max
Input Voltage Range	24Vdc+5%	24Vdc-5%
Input Current	-	-
Efficiency	85%	95%
Environmental Ratings		
Parameter	Min	Max
Operating Ambient Temperature	-10	60
Storage Ambient Temperature	-20	80



LED Circle Technology Corporation

Web: www.ledcircle.com

E-mail: philips@ledcircle.com

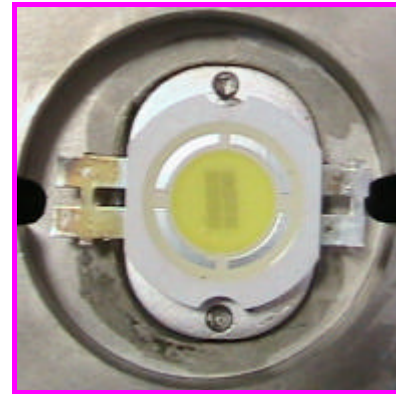
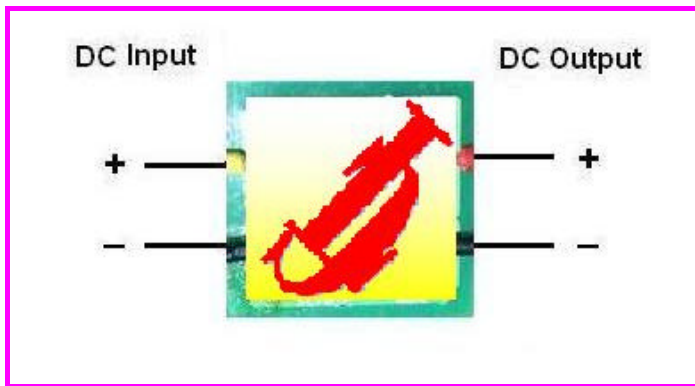
Tel: +886-3-5679283

Fax: +886-3-5678764

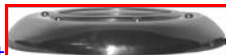
Drawing and Diagram

1. Alva CCD LED Driver: 15mm (L) x 15mm(W) x 3mm(H)

2. LED Module: 22.5mm(D) x 7.5mm(H)



Example: Completed products



Important: Please contact our engineer to ensure installation and maintenance being properly executed to obtain maximum performance, efficiency and durability from the LED lighting product.

Disclaimer: While every care has been taken with the details on this specification sheet, we accept no responsibility for any inaccuracies and reserve the right to change these specifications without notice to always ensure that you are receiving a superior product.

光圓科技股份有限公司

新竹市金山六街 55 號 1 樓 (新竹第二辦公室)

LED CIRCLE Technology Corporation

1F, No. 55, Jin-Shan 6th St., Hsin-Chu City 300, Taiwan, R.O.C. (Hsin-Chu 2nd Office)

TEL: +886-3-567-9283 Fax: +886-3-567-8764 Web : www.ledcircle.com; Email: philips@ledcircle.com

高品質的 LED 照明產品就在光圓科技===== LC provides high quality LED Lighting products